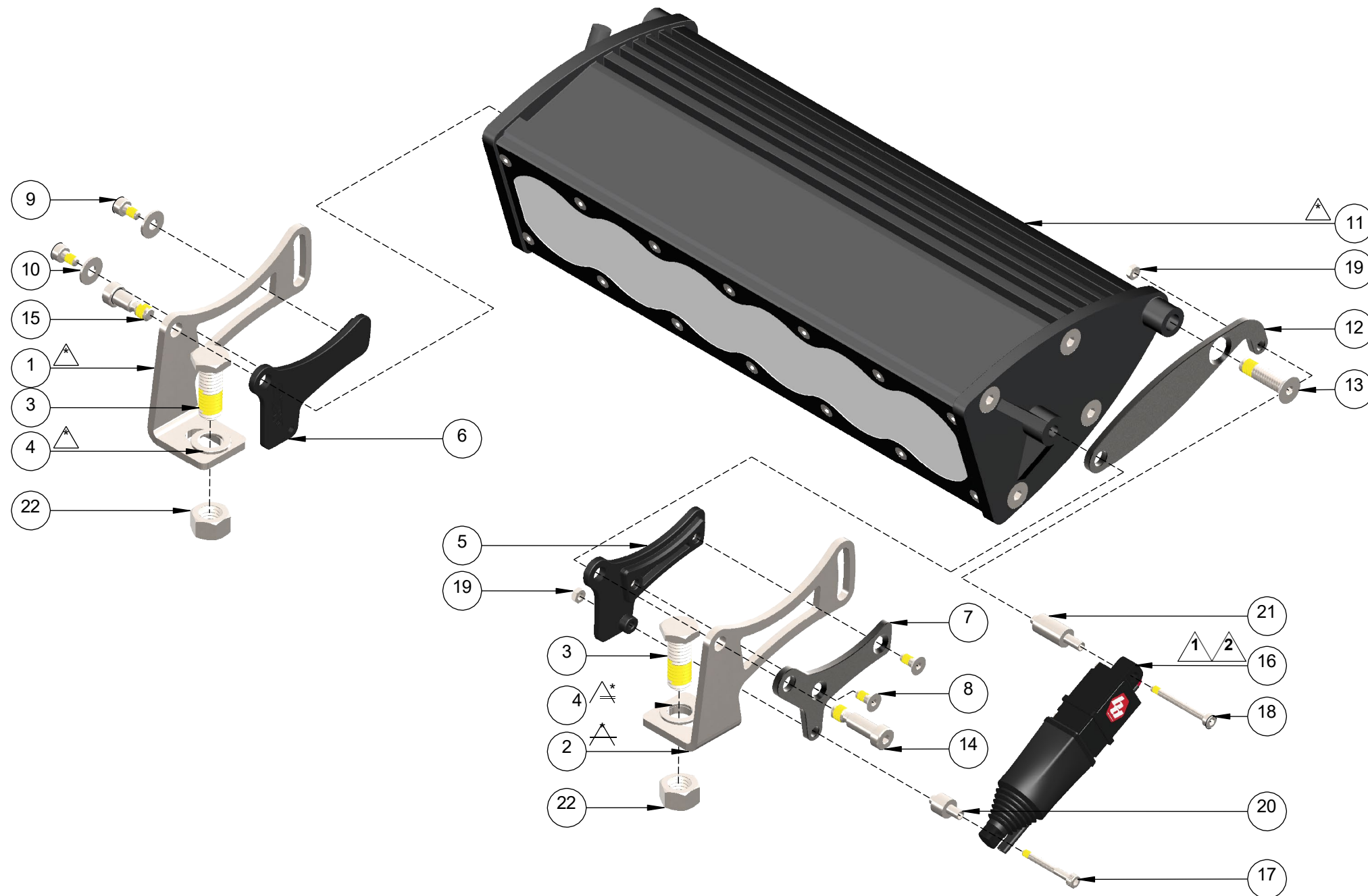


Installation Instructions
ONX6+ Single
10" Length

BILL OF MATERIALS

ONX6+ Single

10" Length



	ITEM NO.	DESCRIPTION	QTY.
STEP 1	1	ONX6+ Bracket, Right	1
	2	ONX6+ Bracket, Left	1
	3	3/8"-16 X 1" Hex Low Head Screw	2
	4	3/8" Washer	2
STEP 2	5	Thrust Insert, ONX6+, Left	1
	6	Thrust Insert, ONX6+, Right	1
	7	Mount Plate, ONX6+	1
	8	M4 X 9mm Flat Head Cap Screw	2
	9	M4 X 7mm Socket Head Cap Screw	2
STEP 3	10	M4 Oversized Washer	2
	11	ONX6+ Housing	1
	12	Pivot Plate, ONX6+	1
STEP 4	13	1/4"-20 X 1" Flat Head Cap Screw, Undercut	1
	14	Ø1/4" X .560" Shoulder Screw	1
STEP 5	15	Ø1/4" X .321" Shoulder Screw	1
	16	12V Actuator	1
	17	M3 X 26mm Socket Head Cap Screw	1
	18	M3 X 30mm Socket Head Cap Screw	1
	19	M3 Nut	2
	20	M3 Screw Spacer, Shoulder Type 1, 6mm L	1
STEP 6	21	M3 Screw Spacer, Shoulder Type 2, 15mm L	1
	22	3/8"-16 Nut	2

NOTES:

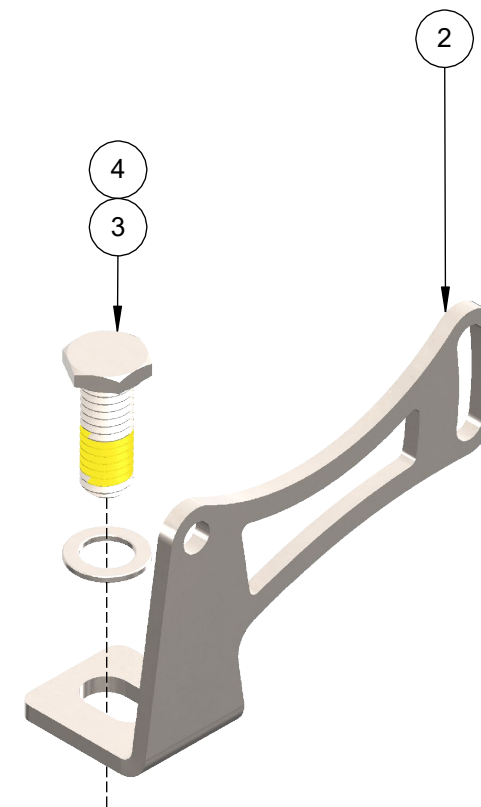
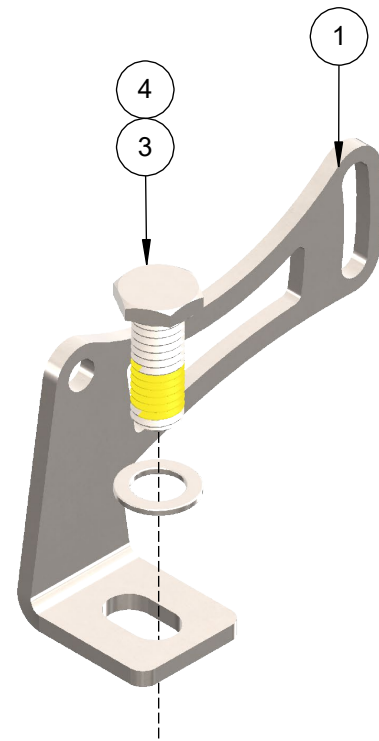
- 1. Actuator cannot be moved manually.
Forcing the actuator up or down will damage the actuator and void the limited lifetime warranty
- 2. Actuators can be synced when used in multiples.
Move actuator fully down or fully up to home and resync.
- This item not included in kit.

TOOLS NEEDED

- 2.5mm HEX WRENCH
- 3mm HEX WRENCH
- 5.5mm WRENCH
- 9/16" WRENCH (2X)



	ITEM NO.	DESCRIPTION	QTY.
STEP 1	1	ONX6+ Bracket, Right	1
	2	ONX6+ Bracket, Left	1
	3	3/8"-16 X 1" Hex Low Head Screw	2
	4	3/8" Washer	2

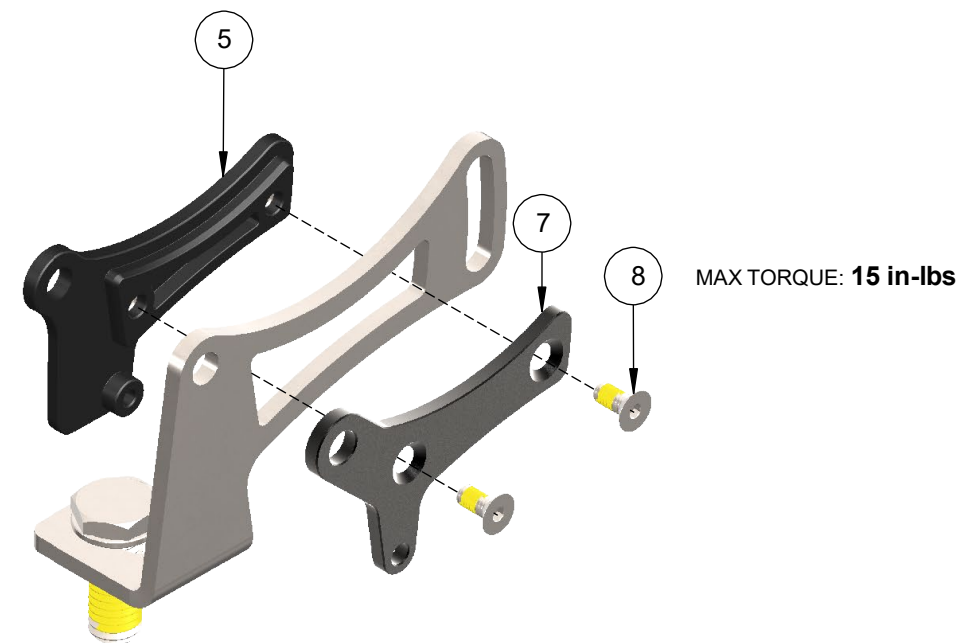
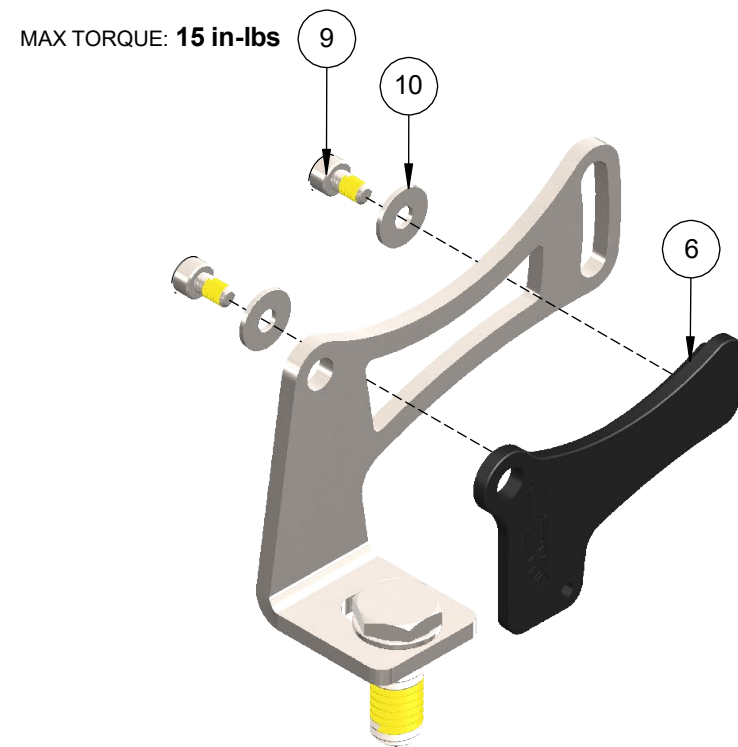


Step 1
Install bolts into brackets

ITEMS: (1) (2) (3) (4)



	ITEM NO.	DESCRIPTION	QTY.
STEP 2	5	Thrust Insert, ONX6+, Left	1
	6	Thrust Insert, ONX6+, Right	1
	7	Mount Plate, ONX6+	1
	8	M4 X 9mm Flat Head Cap Screw	2
	9	M4 X 7mm Socket Head Cap Screw	2
	10	M4 Oversized Washer	2



Step 2

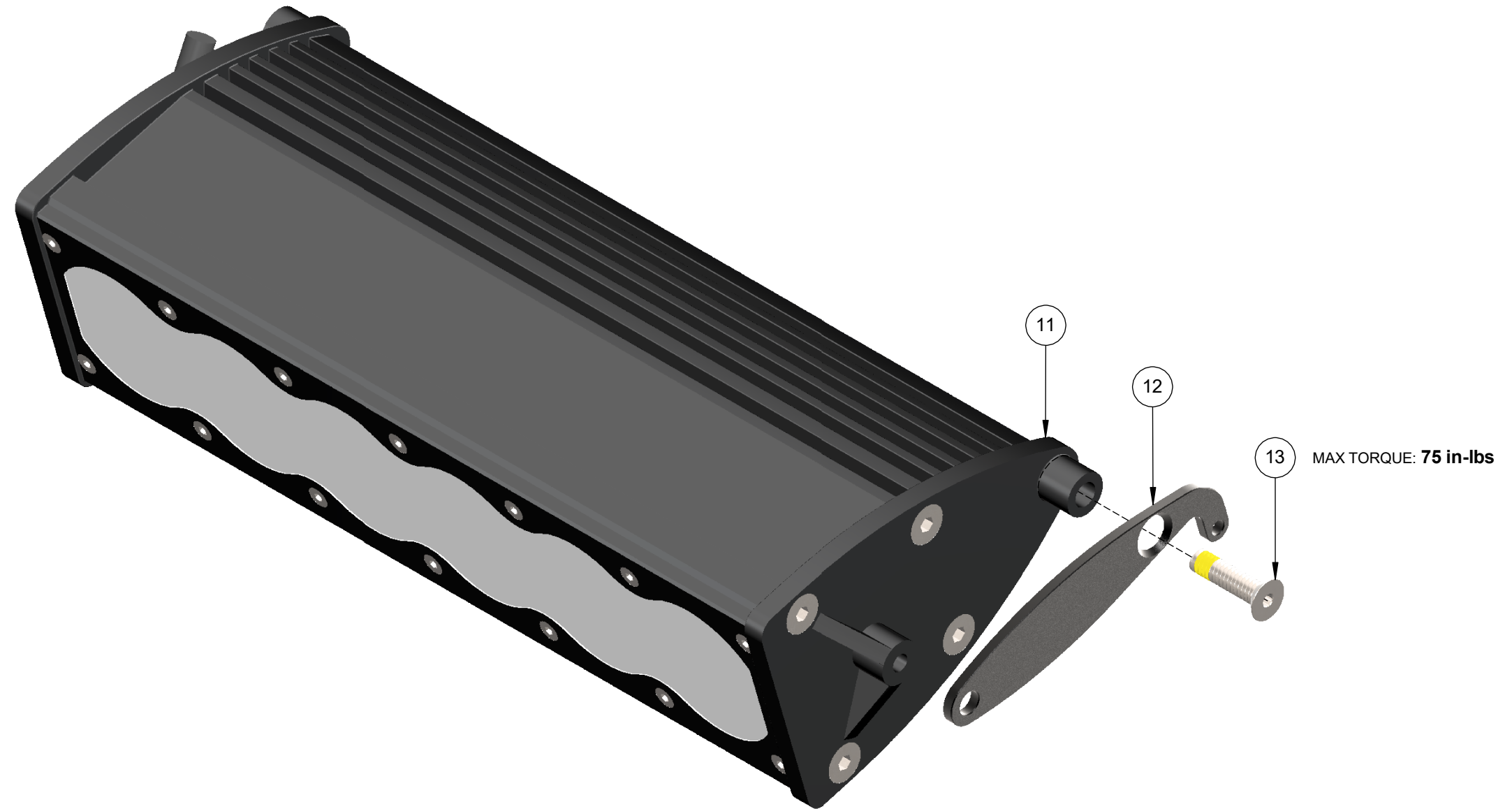
Install thrust inserts + mount plate to brackets

ITEMS: (5) (6) (7) (8) (9) (10)

TOOLS NEEDED: • 2.5mm HEX WRENCH • 3mm HEX WRENCH



	ITEM NO.	DESCRIPTION	QTY.
STEP 3	11	ONX6+ Housing	1
	12	Pivot Plate, ONX6+	1
	13	1/4"-20 X 1" Flat Head Cap Screw, Undercut	1



Step 3
Install pivot plate to housing

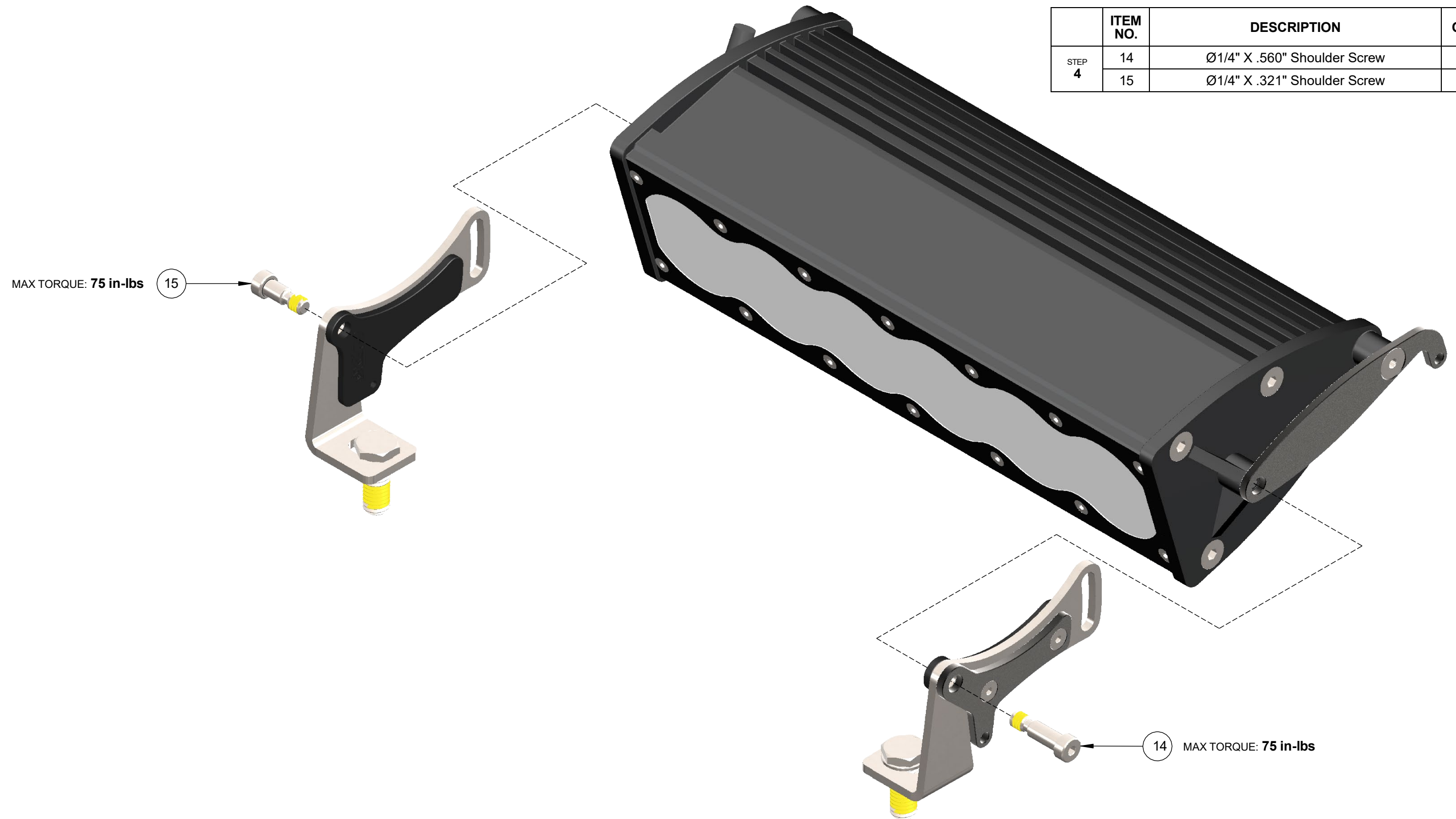
ITEMS: (11) (12) (13)

TOOLS NEEDED: • 3mm HEX WRENCH



For left side actuator installation.
Install opposite side for right side actuator installation

	ITEM NO.	DESCRIPTION	QTY.
STEP 4	14	Ø1/4" X .560" Shoulder Screw	1
	15	Ø1/4" X .321" Shoulder Screw	1



Step 4

Install shoulder screws through brackets to housing

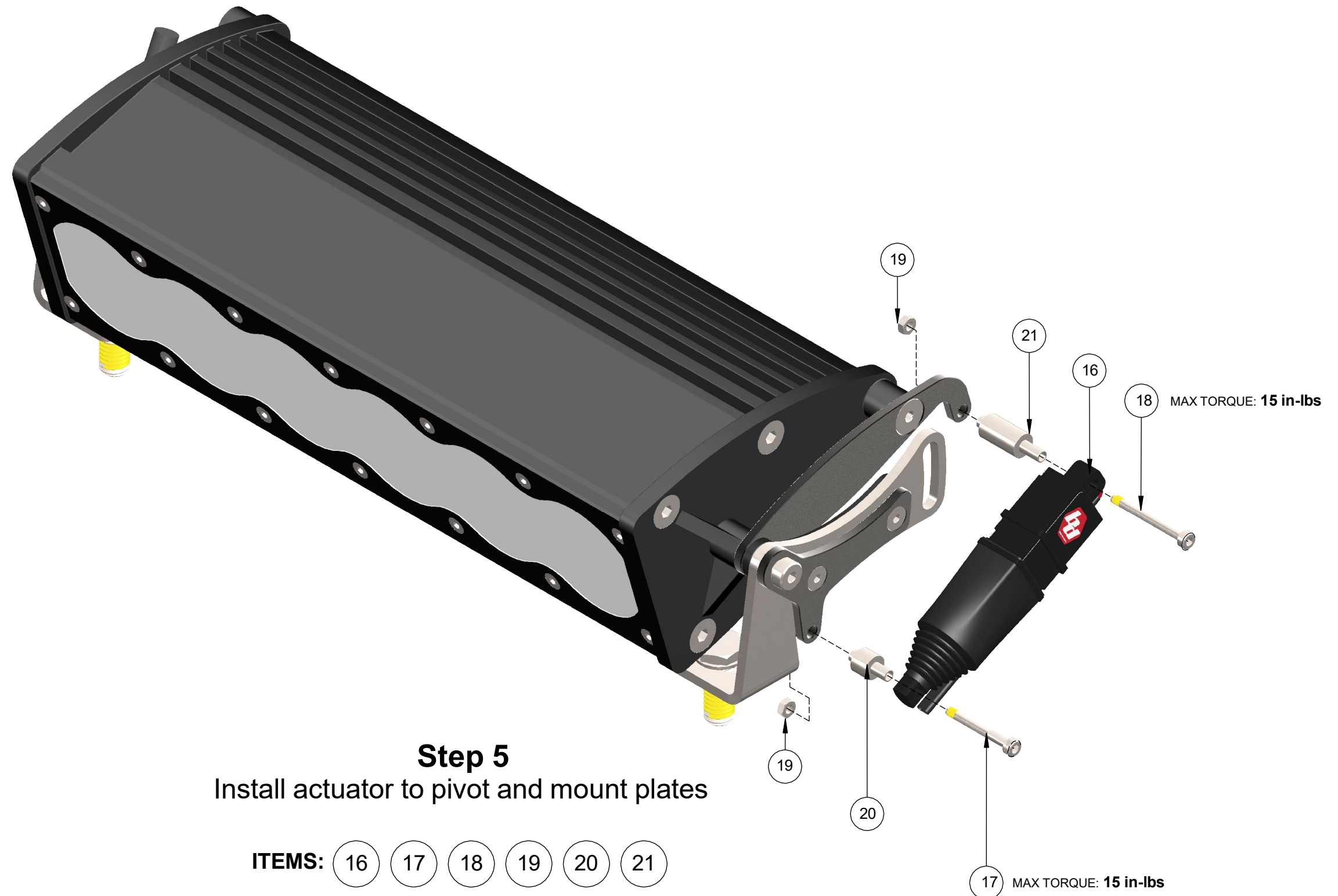
ITEMS: 14 15

TOOLS NEEDED: • 3mm HEX WRENCH



For left side actuator installation.
Install opposite side for right side actuator installation

	ITEM NO.	DESCRIPTION	QTY.
STEP 5	16	12V Actuator	1
	17	M3 X 26mm Socket Head Cap Screw	1
	18	M3 X 30mm Socket Head Cap Screw	1
	19	M3 Nut	2
	20	M3 Screw Spacer, Shoulder Type 1, 6mm L	1
	21	M3 Screw Spacer, Shoulder Type 2, 15mm L	1



Step 5
Install actuator to pivot and mount plates

ITEMS: 16 17 18 19 20 21

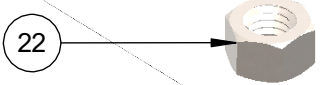
TOOLS NEEDED: • 2.5mm HEX WRENCH • 5.5mm WRENCH



For left side actuator installation.
Install opposite side for right side actuator installation

	ITEM NO.	DESCRIPTION	QTY.
STEP 6	22	3/8"-16 Nut	2

MAX TORQUE: 200 in-lbs (22)

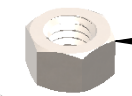


Step 6
Attach to vehicle

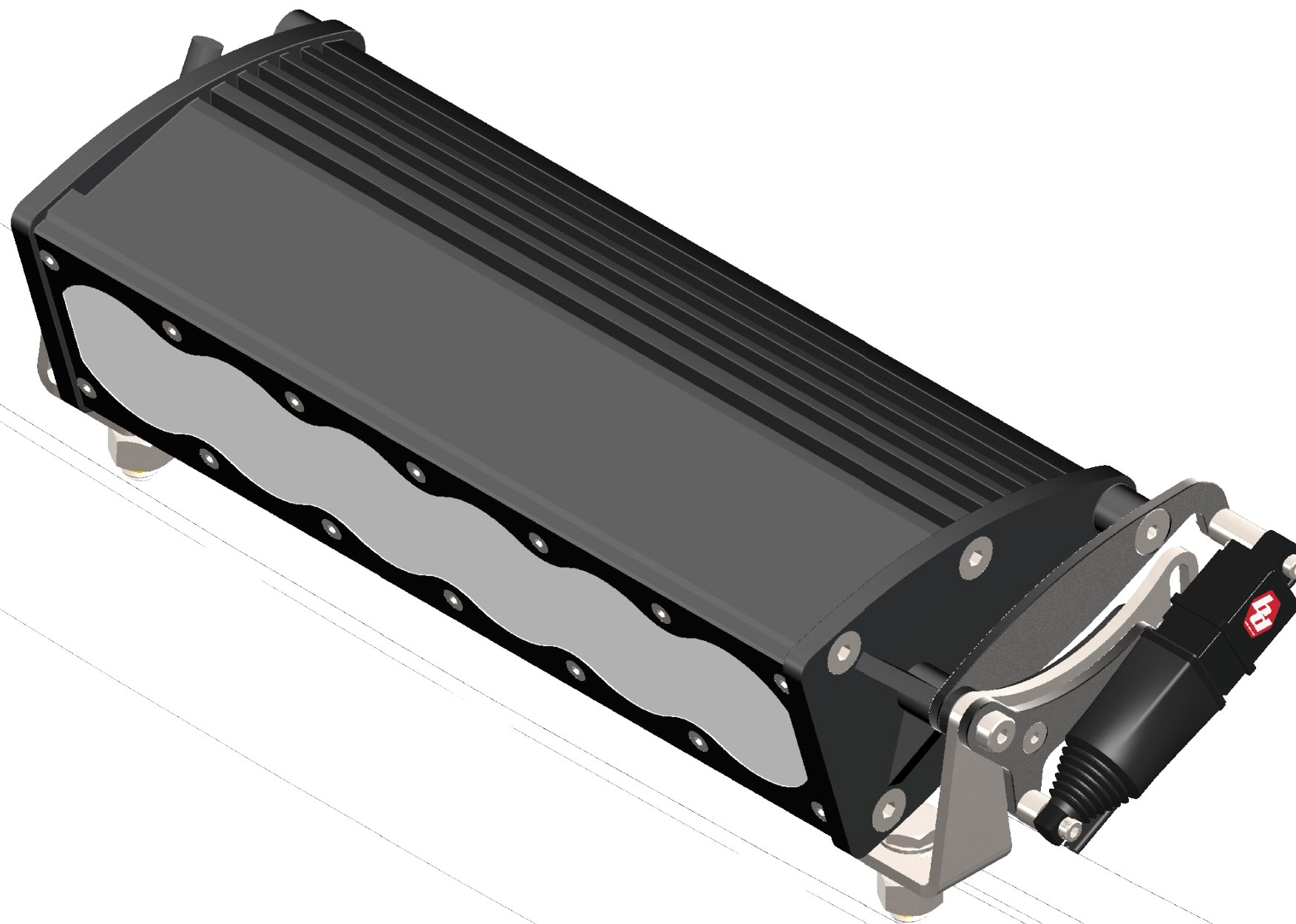
ITEMS: (22)

TOOLS NEEDED: .9/16" WRENCH (2X)

(22) MAX TORQUE: 200 in-lbs



For left side actuator installation.
Install opposite side for right side actuator installation



End
Installation Complete

